

Series 1060/G

- Test probe for cable harness testing
- Test probe geometry for position test
- Screwable - threaded design - against the creeping out of the Test Probe out of the receptacle
- Very robust

Mechanical Data	
Center	4.00 mm/160 mil
Temperature Range	-30 °C - +120 °C
Full Travel	5.50 mm
Working Travel	4.40 mm
Pre-loaded Spring Force	0.20/ 0.20/ 0.40/ 0.50/ 0.80/ 0.70 N
Spring Force at Working Travel	0.40/ 0.60/ 1.50/ 2.25/ 3.00/ 5.00 N

Electrical Data	
Max. Current Rating	5.0...8.0 A
Typical Continuity Resistance	<= 30 mOhm

Materials	
Barrel	Brass, gold-plated
Spring	Spring Steel, Stainless Steel, gold-plated
Plunger	Steel
Receptacle	Brass, gold-plated
Stranded Wire AWG 20 (Black)	Copper, tin-plated, insulated

Recommended Diameter of Drill	
HP 2361.1 (Trolitax)	3.00 mm
HGW 2372	3.01 mm

High-Temperature Applications	
Temperature Range	-40 °C - +250 °C
Pre-Loaded Spring Force	0.40/ 0.40/ 0.80 N
Spring Force at Working Travel (Order Index E)	1.50/ 2.25/ 3.00 N

Available Screw Tools		
Article Designation	max. Tip Diameter	max. Plate Diameter
WFS 1060/G-4.0-3.0	3.0	3.5
WFS 1060/G-5.0-4.0-Z	4.0	4.0
WFS 1060/G-6.0-5.0-Z	5.0	5.0
WFS 1060/G-4.0-2.3-SW	2.3	5.0

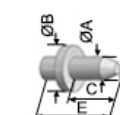
How to Order

1060/ G - D1013 - 1.5 N - Au - 1.00

1 2 3 4 5 6

1. Series 2. Threaded Design 3. Tip Style
4. Spring Force 5. Tip Plating 6. Tip Diameter

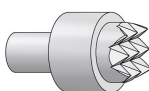
Tip style - Diameter - Plating



BAx

Ni

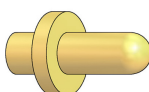
Tip Style	Tip-Ø mm A	Plate-Ø mm B	Tip Length mm C	Overall length mm D	Installation height mm E	Screw Tool
BA2	1.80	4.00	3.00	29.00	11.20	WFS 1060/G-5.0-4.0-Z
BA3	1.80	4.00	2.50	29.00	11.20	- " -
BA5	1.80	4.00	2.50	28.50	10.70	- " -
BA7	1.80	4.00	2.10	29.00	11.20	- " -
BA71	1.80	4.00	2.10	29.00	11.20	- " -



C42

4.00 Ni

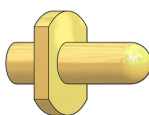
Tip Style	Tip-Ø mm A	Plate-Ø mm B	Tip Length mm C	Overall length mm D	Installation height mm E	Screw Tool
C42	4.00	5.00 mm	1.00	28.50	10.70	WFS 1060/G-6.0-5.0-Z



D1xxx

Au

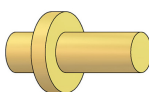
Tip Style	Tip-Ø mm A	Plate-Ø mm B	Tip Length mm C	Overall length mm D	Installation height mm E	Screw Tool
D1001	1.40	3.50	2.40	28.90	11.10	WFS 1060/G-4.0-3.0
D1002	1.40	3.50	4.00	30.50	12.70	- " -
D1003	1.40	3.50	3.30	29.80	12.00	- " -
D1004	1.00	3.50	4.00	30.50	12.70	- " -
D1013	1.00	3.50	2.80	29.30	11.50	- " -



Dx9xx

Au

Tip Style	Tip-Ø mm A	Plate-Ø mm B	Tip Length mm C	Overall length mm D	Installation height mm E	Screw Tool
D1904	1.00	3.50	4.00	30.50	12.70	WFS 1060/G-4.0-2.3-SW

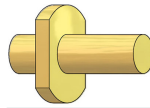


F1xxx

Au

Tip Style	Tip-Ø mm A	Plate-Ø mm B	Tip Length mm C	Overall length mm D	Installation height mm E	Screw Tool
F11	1.30	4.70	7.00	33.50	15.70	WFS 1060/G-6.0-5.0-Z
F12	1.30	4.70	5.00	33.50	15.70	- " -
F13	1.30	4.70	2.00	30.50	12.70	- " -
F14	2.60	4.00	1.80	29.00	11.20	WFS 1060/G-5.0-4.0-Z
F33	2.00	4.00	2.50	36.00	18.70	- " -
F40	1.50	4.00	2.65	28.50	10.70	- " -
F41	4.00	4.70	2.00	28.50	10.70	WFS 1060/G-6.0-5.0-Z
F1007	1.30	4.70	5.30	31.80	14.00	- " -
F1008	1.40	3.50	2.00	28.50	10.70	WFS 1060/G-5.0-4.0-Z
F1009	4.00	5.00	2.00	28.50	10.70	WFS 1060/G-6.0-5.0-Z
F1010	1.40	3.50	1.70	28.20	10.40	WFS 1060/G-5.0-4.0-Z
F1011	2.30	3.50	2.00	28.50	10.70	- " -
F1012	1.40	3.50	3.00	29.50	11.70	- " -
F1015	2.30	3.50	1.80	28.30	10.50	- " -
F1016	1.30	4.70	3.60	30.10	12.30	WFS 1060/G-6.0-5.0-Z
F1017	1.30	4.70	2.70	29.20	11.40	- " -
F1018	1.80	4.50	1.50	28.00	10.20	- " -

Series 1060/G

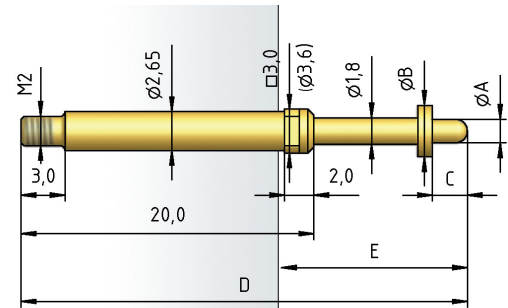


Fx9xx

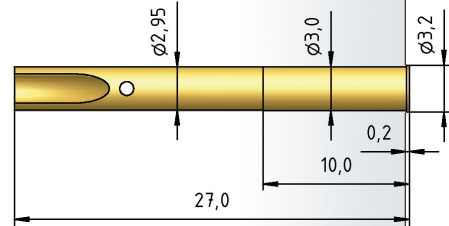
Au

Tip Style	Tip-Ø mm A	Plate-Ø mm B	Tip Length mm C	Overall length mm D	Installation height mm E	Screw Tool
F1907	1.30	4.70	5.30	31.80	14.00	WFS 1060/G-4.0-2.3
F1909	4.00	5.00	2.00	28.50	10.70	- " -
F1916	1.30	4.70	3.60	30.10	12.30	- " -
F1917	1.30	4.70	2.70	29.20	11.40	- " -
F1918	1.80	4.50	1.50	28.00	10.20	- " -

1060/G



H 1060/G-L



H 1060/GR-L

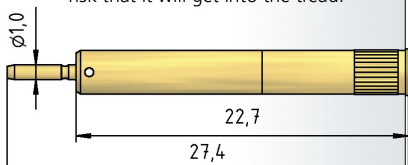


H 1060/GRV-L



This receptacle is sealed vacuum-tight when a wire is soldered on.
Important:
If too much solder is used there is a risk that it will get into the tread.

H 1060/GR-ST1.0



ST 1015-C1.0-V800
(without cable
ST 1015-C1.0)

