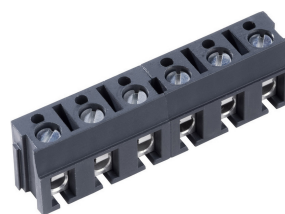


AK110/..DS-7.5-V-GREY







A Phoenix Mecano Brand

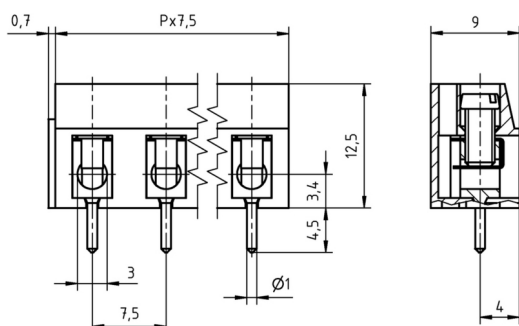
Technical Data

Wire sizes		Insulating Material	
Solid min	0.2 mm ²	Material	PA 6.6
Solid max	2.5 mm ²	Flammability Class	UL 94 V-0
Stranded (flexible) min	0.2mm ²	Temperatures	
Stranded (flexible) max	2.5 mm ²	Operating Temperature (without mech. load)	-40 °C - 105 °C
Stranded with Ferrule min	0.2 mm ²	Store Temperature	-40 °C - 105 °C
Stranded with Ferrule max	2.5 mm ²	Wave Soldering Process	
Dimensions		Soldering Temperature, recommended	260 °C
Stripped Length	7.0 mm	Peak Soldering Time, recommended	3-4 s
PCB Hole Diameter	1.3 mm	Reflow Process	
Materials		Soldering Temperature, recommended	-
Clamp	Brass	Peak Soldering Time, recommended	-
Wire Guard	Stainless Steel		
Screw	Steel		

Colours

	GREY, RAL 7016
	BLACK, RAL 9011
	RED, RAL 3003
	LIGHT GREEN, similar RAL 6018


Colours according to RAL, there may be variations on colour due to production conditions. Special colours on request.



Order Data (Spacing 7.5 mm)

Poles	Width (mm)	Article Designation	Article Number	PU
2	15.70	AK110/2DS-7.5-V-GREY	50110020070 F	200
3	23.20	AK110/3DS-7.5-V-GREY	50110030070 F	200
4	30.70	AK110/4DS-7.5-V-GREY	50110040070 F	200
5	38.20	AK110/5DS-7.5-V-GREY	50110050070 E	100
6	45.70	AK110/6DS-7.5-V-GREY	50110060070 E	100
7	53.20	AK110/7DS-7.5-V-GREY	50110070070 E	100
8	60.70	AK110/8DS-7.5-V-GREY	50110080070 E	100
9	68.20	AK110/9DS-7.5-V-GREY	50110090070 E	100
10	75.70	AK110/10DS-7.5-V-GREY	50110100070 D	50
11	83.20	AK110/11DS-7.5-V-GREY	50110110070 D	50
12	90.70	AK110/12DS-7.5-V-GREY	50110120070 D	50

Accessoires

Figure	Designation	Article Number
	Bridge, 2-pole, insulated, BRI/2-7.5/7.62-L8.2-LIGHT GREY	Order Data: 50000000017

Ratings

UseGroup	cRU [®] US			VDE	
	B	C	D		
Rated Voltage	300 V	150 V	300 V	750 V	
Rated Current	20 A	20 A	10 A	24 A	
Rated Wire Size				min	max
- solid	AWG 22-14	AWG 22-14	AWG 22-14	0.5 mm ²	2.5 mm ²
- stranded	AWG 22-14	AWG 22-14	AWG 22-14	0.5 mm ²	2.5 mm ²
Torque	0.45 Nm	0.45 Nm	0.45 Nm	0.50 Nm	
Screw Size	M3	M3	M3	M3	
Test Voltage	1.60 kV	1.30 kV	1.60 kV	3.0 kV	