

Series 1015/G

- Test probe for cable harness testing
- Test probe geometry for position test
- Screwable - threaded design - against the creeping out of the Test Probe out of the receptacle
- Fast wiring system

Mechanical Data

Center	2.54 mm/100 mil
Temperature Range	-30 °C - +120 °C
Full Travel	4.40 mm
Working Travel	3.50 mm
Pre-loaded Spring Force	0.25/ 0.40/ 0.40/ 0.30/ 0.70/ 0.60 N
Spring Force at Working Travel	0.70/ 1.00/ 1.50/ 1.70/ 2.50/ 3.00 N

Electrical Data

Max. Current Rating	3.0 A
Typical Continuity Resistance	<= 30 mOhm

Materials

Barrel	Brass, gold-plated
Spring	Spring Steel, gold-plated
Plunger	Steel, gold-plated
Receptacle	Brass, gold-plated
Stranded Wire AWG 20 (Black)	Copper, tin-plated, insulated

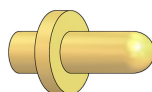
Recommended Diameter of Drill

HP 2361.1 (Trolitax)	1.68...1.70 mm
HGW 2372	1.68...1.70 mm

Available Screw Tools

Article Designation	max. Tip Diameter	max. Plate Diameter
WFS 1015/G-2.54-1.5	1.5	1.5

Tip style - Diameter - Plating

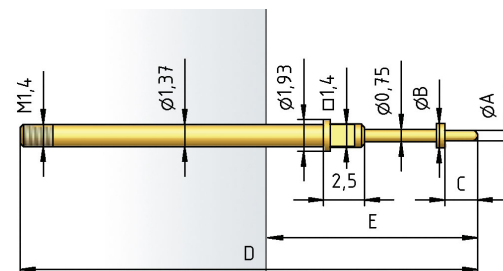


Dxxxx

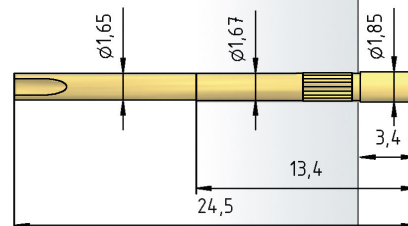
Au

Tip Style	Tip-Ø mm A	Plate-Ø mm B	Tip Length mm C	Overall length mm D	Installation height mm E	Screw Tool
D1001	0.65	1.50	4.00	29.90	14.80	WFS 1015/G-2.54-1.5
D1002	0.65	1.50	2.80	28.70	13.60	- "
D1003	0.65	1.50	3.30	29.20	14.10	- "
D1004	0.65	1.50	3.40	29.30	14.20	- "
D1005	0.70	1.50	4.00	29.90	14.80	- "
D1006	0.65	1.40	5.50	31.40	16.30	- "
D0615	0.65	1.50	1.50	27.40	12.30	- "
D0620	0.65	1.50	2.00	27.90	12.80	- "
D0625	0.65	1.50	2.50	28.40	13.30	- "
D0630	0.65	1.50	3.00	28.90	13.80	- "
D0635	0.65	1.50	3.50	29.40	14.30	- "
D0645	0.65	1.50	4.50	30.40	15.30	- "
D0650	0.65	1.50	5.00	30.90	15.80	- "

1015/G



H 1015/GR-L

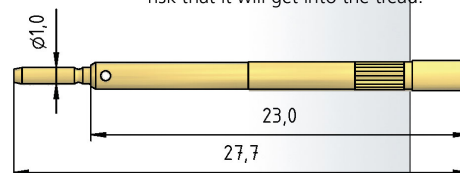


H 1015/GRV-L

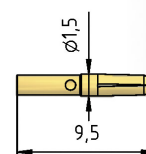


This receptacle is sealed vacuum-tight when a wire is soldered on.
Important:
If too much solder is used there is a risk that it will get into the tread.

H 1015/GR-ST1.0



ST 1015-C1.0



ST 1015-C1.0-V800-BK



How to Order

1015/ G - D1001 - 1.5 N - Au - 0.65

1 2 3 4 5 6

1. Series 2. Threaded Design 3. Tip Style
4. Spring Force 5. Tip Plating 6. Tip Diameter