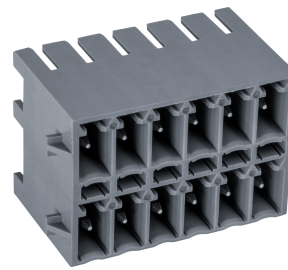


STL1541/..FR-3.5-H-BASALTGREY

- With screw flange also available



Technical Data

Wire sizes		Insulating Material	
Solid min	-	Material	LCP
Solid max	-	Flammability Class	UL 94 V-0
Stranded (flexible) min	-	Temperatures	
Stranded (flexible) max	-	Operating Temperature (without mech. load)	-40 °C - 105 °C
Stranded with Ferrule min	-	Store Temperature	-40 °C - 105 °C
Stranded with Ferrule max	-	Wave Soldering Process	
Dimensions		Soldering Temperature, recommended	260 °C
PCB Hole Diameter	1.2 mm	Peak Soldering Time, recommended	3-4 s
Materials		Reflow Process	
Thread Insert, Flange	Brass	Soldering Temperature, recommended	-
Contact Pin	Copper Alloy	Peak Soldering Time, recommended	-

Colours

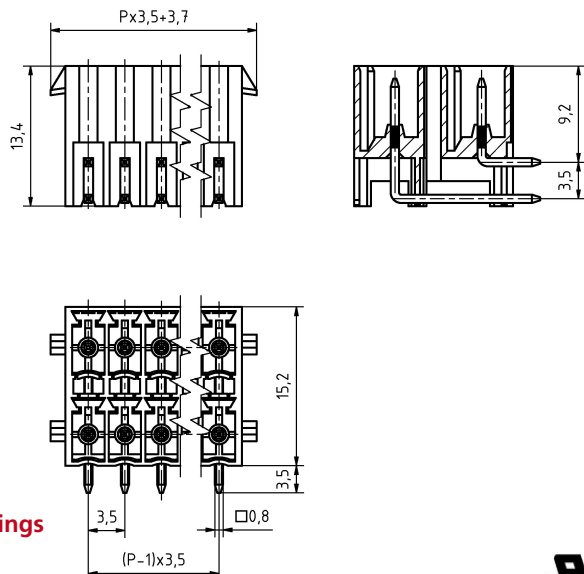
	BASALT GREY, RAL 7012
	GREEN, RAL 6018
	LIGHT GREEN, similar RAL 6018

Colours according to RAL, there may be variations on colour due to production conditions. Special colours on request.

Counterparts (Spacing 3.5 mm)

Terminal Block
AK4541

In combination of connectors with different admission data, the lower value is valid.



Ratings

UseGroup	C *			D	*
	B	-	300 V		
Rated Voltage	300 V	-	300 V	160 V	
Rated Current	10 A	-	10 A	10 A	
Overvoltage Category				III	
Test Voltage	1.60 kV	-	1.60 kV	2.5 kV	
Pollution Degree				3	

* Approval Pending

Order Data (Spacing 3.5 mm)

Poles	Width (mm)	Article Designation	Article Number	PU
2	11.30	STL1541/2FR-3.5-H-BASALTGREY	51541026001 E	100
3	14.80	STL1541/3FR-3.5-H-BASALTGREY	51541036001 E	100
4	18.30	STL1541/4FR-3.5-H-BASALTGREY	51541046001 E	100
5	21.80	STL1541/5FR-3.5-H-BASALTGREY	51541056001 E	100
6	25.30	STL1541/6FR-3.5-H-BASALTGREY	51541066001 D	50
7	28.80	STL1541/7FR-3.5-H-BASALTGREY	51541076001 D	50
8	32.30	STL1541/8FR-3.5-H-BASALTGREY	51541086001 D	50
9	35.80	STL1541/9FR-3.5-H-BASALTGREY	51541096001 D	50
10	39.30	STL1541/10FR-3.5-H-BASALTGREY	51541106001 D	50
11	42.80	STL1541/11FR-3.5-H-BASALTGREY	51541116001 D	50
12	46.30	STL1541/12FR-3.5-H-BASALTGREY	51541126001 D	50
13	49.80	STL1541/13FR-3.5-H-BASALTGREY	51541136001 D	50
14	53.30	STL1541/14FR-3.5-H-BASALTGREY	51541146001 D	50
15	56.80	STL1541/15FR-3.5-H-BASALTGREY	51541156001 D	50
16	60.30	STL1541/16FR-3.5-H-BASALTGREY	51541166001 D	50
17	63.80	STL1541/17FR-3.5-H-BASALTGREY	51541176001 D	50
18	67.30	STL1541/18FR-3.5-H-BASALTGREY	51541186001 D	50
19	70.80	STL1541/19FR-3.5-H-BASALTGREY	51541196001 D	50
20	74.30	STL1541/20FR-3.5-H-BASALTGREY	51541206001 D	50